

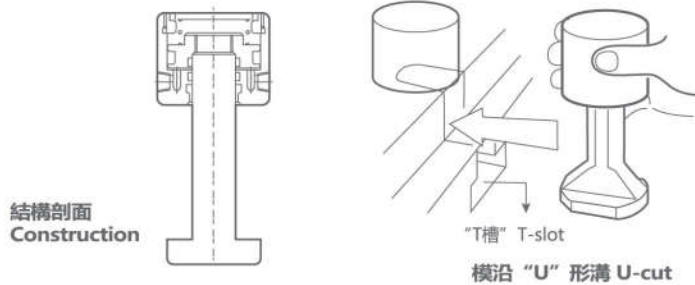
▼ 尚川快速換模系統之TX型夾模器

SUNZUANT Q.D.C.S. TX DIE CLAMP

此型夾模器具節省空間的好處，但模沿須有“U”溝供其夾持，其底部被制成適合在台盤“T”槽滑動

This compact piston-type clamp is space-efficient. It requires U-cuts on the die shoe. The leg of the clamp is machined to fit the T-slot on the bolster. The automatic slider model makes remote control possible.

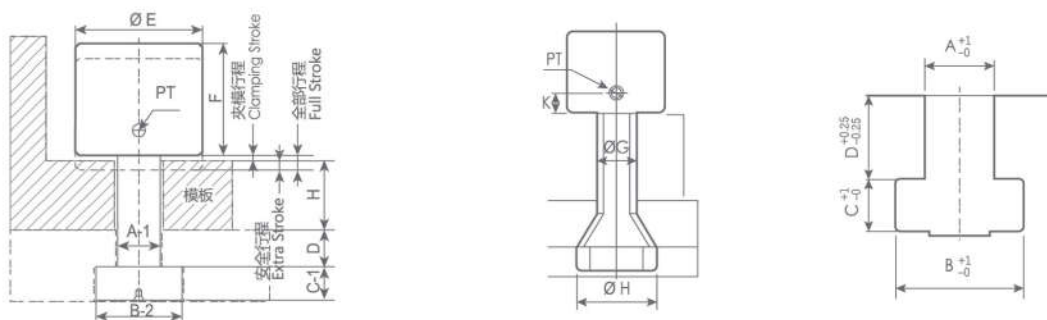
◎ 規格特性 / Specifications



※ 安全行程為全部行程與夾模行程之差值，為特別的安全預留量。
Extra Stroke is the difference value between full stroke and clamping stroke with the extra space for safe operation.

型號 Model	TX-2	TX-4	TX-6	TX-10	TX-16	TX-25
夾持力(於油壓250Kg/cm ²)tons Clamping Force(at 250Kg/cm ²)	2	4	6.3	10	16	25
全部行程(X)mm Full Stroke mm	8	8	8	8	8	8
夾模行程(Y)mm Clamping Stroke mm	4	3	3	3	3	3
安全行程(Z)mm Extra Stroke mm	4	5	5	5	5	5
夾模器缸體容量(全行程)cc Cylinder Capacity at Full Stroke cc.	6.5	13	21	32	54	84

◎ 外型尺寸 / Outline Dimensions



型號 Model	E	F	G	H	K	MIN.C	PT
TX-2	49	52	18	38	12	8	1/8
TX-4	68	60	25	59	15	10	1/4
TX-6	78	65	30	64	16	14	1/4
TX-10	98	71	40	79	16	17	1/4
TX-16	127	78	50	88	16	20	1/4
TX-25	148	100	60	98	15	23	1/4

型號 Model	A	B	C	D
TX-2	22	37	16	24
TX-4	22	37	16	24
TX-6	28	48	20	28
TX-10	28	48	20	28
TX-16	28	48	23	28
TX-25	36	56	25	28

選用泵浦 Power units model
SP6308U-□-□
SP1014U-□-□

※ 註：模沿厚度(h)及T槽(A.B.C.D.)尺寸如為既有(特殊)尺寸，請於訂購時確認之。
before purchase, please verify mold edge thickness (h) and T Slot (A.B.C.D.) as standard or special dimensions.

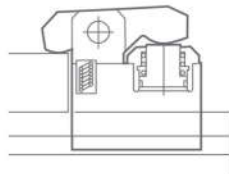
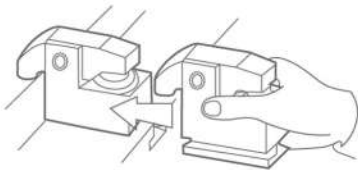
▼ 尚川快速換模系統之TY型夾模器

SUNZUANT Q.D.C.S. TY DIE CLAMP

此型夾模器以杠桿原理作用，夾持模沿，並不需“U”溝，因此有更寬廣的適用範圍。

Because this lever-type clamp does not require a U-cut on the die shoe, it may be used in a wide range of applications. The base of the clamp is machined to fit the T-slot on the bolster. The flange-mount model clamp may be bolted onto the bolster. The automatic slider model makes remote control possible.

◎ 規格特性 / Specifications



結構剖面 Construction

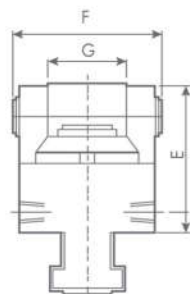
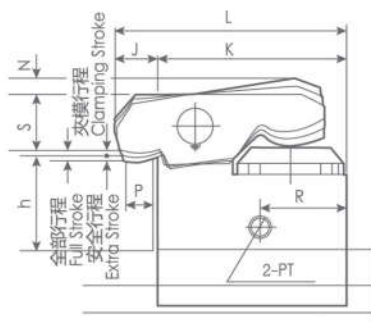


※ 安全行程為全部行程與夾模行程之差值，為特別的安全預留量。

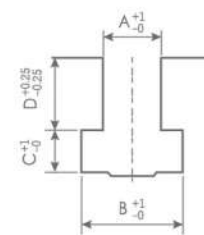
Extra Stroke is the difference value between full stroke and clamping stroke with the extra space for safe operation.

型號 Model	TY-2	TY-4	TY-6	TY-10	TY-16	TY-25
夾持力(於油壓250Kg/cm ²)tons Clamping Force(at 250Kg/cm ²)	2	4	6.3	10	16	25
全部行程(X)mm Full Stroke mm	7	7	8	8	8	8
夾模行程(Y)mm Clamping Stroke mm	2	3	4	3	3	3
安全行程(Z)mm Extra Stroke mm	5	4	4	5	5	5
夾模器缸體容量(全行程)CC Cylinder Capacity at Full Stroke cc	6.5	13.2	22.3	37	61	93

◎ 外型尺寸 / Outline Dimensions



“T” 槽尺寸



型號 Model	MIN.E	F	G	J	K	L	MAX.N	P	R	MIN.S	PT	MIN.C	型號 Model	A	B	C	D	選用泵浦 Power units model
TY-2	59	65	28	22	85	107	10	12.5	48	27	1/8	9.5	TY-2	22	37	16	24	SP6308U-□-□
TY-4	85	87	40	30	120	150	10	16	58	33	1/4	12	TY-4	22	37	16	24	
TY-6	94	97	44	34.5	133	167.5	11	20	68	40	1/4	14	TY-6	28	48	20	28	
TY-10	105	110	50	30	165	195	11	20	82	53	1/4	16.5	TY-10	28	48	20	28	SP1014U-□-□
TY-16	120	125	60	35	200	235	12	20	96	67	1/4	19	TY-16	28	48	23	28	
TY-25	133	155	73	35	240	275	13	20	110	81	1/4	22	TY-25	36	56	25	28	

※ 註：模沿厚度(h)及T槽(A.B.C.D.)尺寸如為既有(特殊)尺寸，請於訂購時確認之。

before purchase, please verify mold edge thickness (h) and T Slot (A.B.C.D.) as standard or special dimensions.

▼ 自動夾模器系列之TAX自走式夾模器

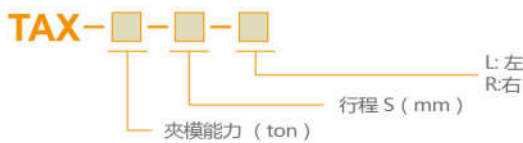
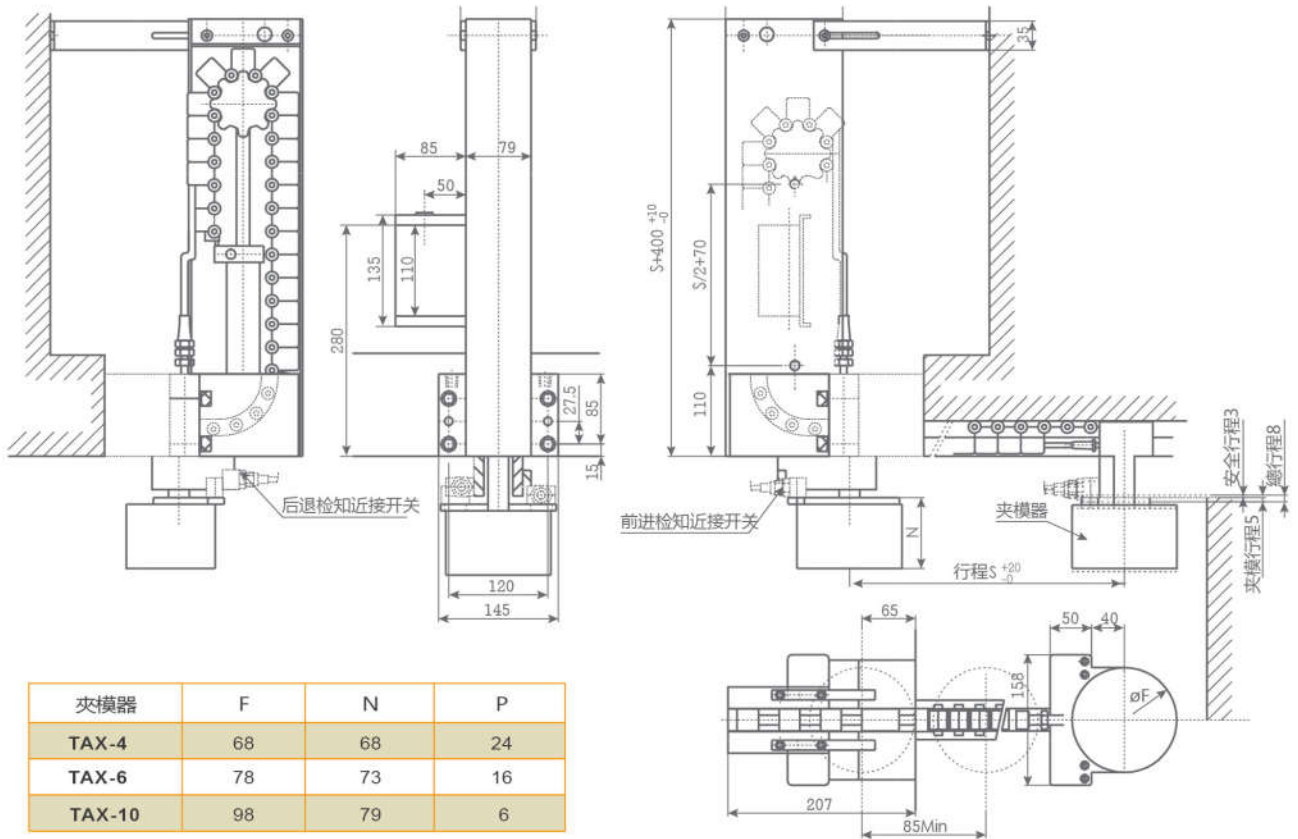
SUNZUANT Q.D.C.S. TAX AUTO MOVING DIE CLAMP

此型夾模器功能為：夾緊模具，特色：利用氣壓機構作動，使夾模器獨立進行夾持，適合大型油壓機上模使用。

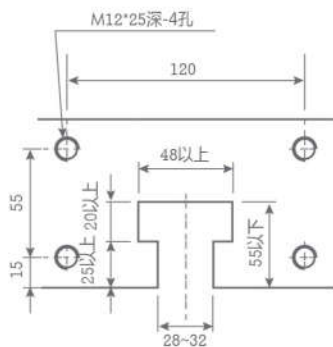
Function: Clamp die

Characters: Self-traveling clammer exclusive for the upper dies driven by the air type actuator.

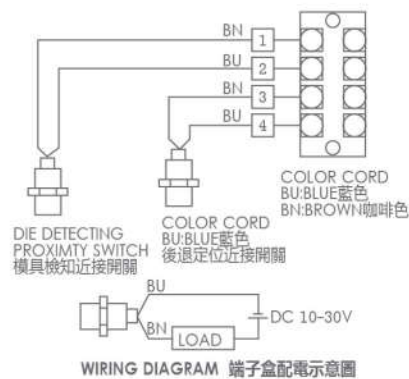
◎ 外型尺寸 / Outline Dimensions



客戶台盤固定孔位及T槽尺寸範圍
T-slot Dimensions



端子盒配電示意圖 Wiring Diagram



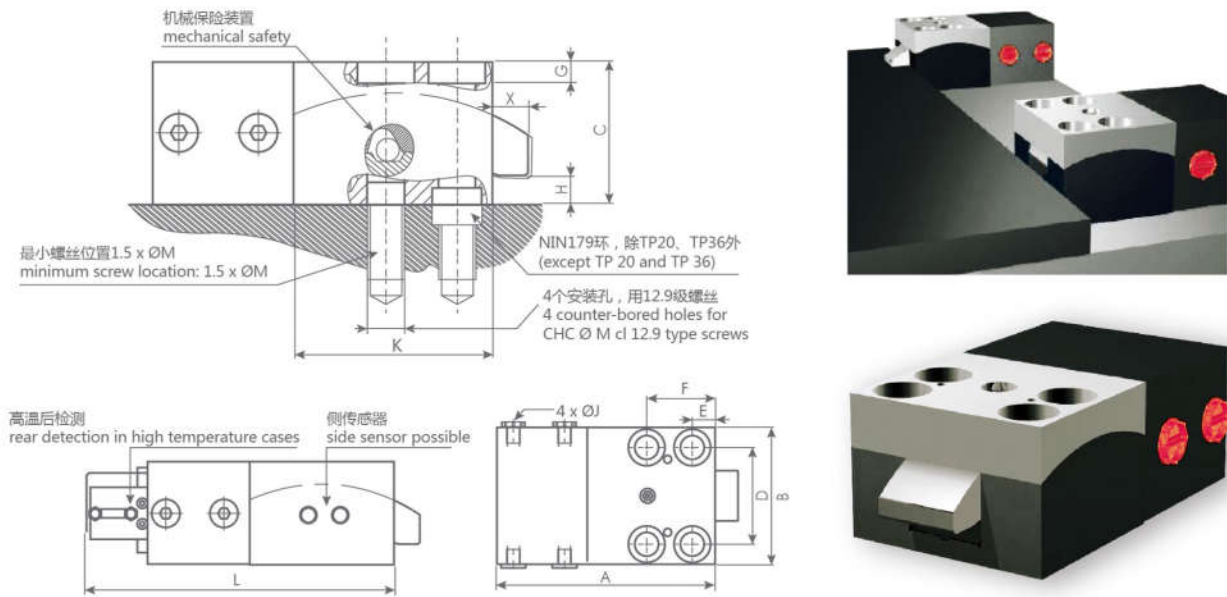
※ 註：選用氣動泵組合規格為SP1014U-□□

▼ 自動夾模器系列之TP伸縮弧型夾模器

SUNZUANT Q.D.C.S. TP ESCAPING ARC CLAMP

TP伸縮弧型夾模器，用于支撐及側邊夾緊模具；夾緊面為卧式，具可移動楔形圓弧結構和往來彎曲路徑的特點，其夾緊力不受溫度變化的干擾，可適用於熱成形等字密集型負載場合。產品型號範圍廣，最高出力可過630kN。TP escaping arc clamps are used on bolsters or rams and clamp the die on the side. The clamping surface is horizontal. The arc shape of the wedge allows to move in and out on a curved path. As a result, the clamping force is vertical and jamming in high temperature situations is eliminated. The clamp is therefore also suitable for intensive load applications such as thermoforming. The range of models is extensive and has clamps of a force that can reach 630 kN.

◎ 外型尺寸 / Outline Dimensions



TP - XX - DET or DET AR - Z - V - S

具體尺寸(請參考表格) for specific dimensions, (please attach a drawing)
 氟橡膠密封件 Viton seals
 油壓連接尺寸 hydraulic connection size
 側檢知 side detection
 後部檢知 rear detection
 夾緊力 clamping force in (kN)

規格尺寸 Specifications	TP 20	TP 36	TP 60	TP 100	TP 160	TP 250	TP 400	TP 630
夾緊力 clamping force (kN)	20	36	60	100	160	250	400	630
重量 weight (kg)	1,95	3,75	7,5	12,8	23	44	84	120
油容量 oil volume (cm ³)	15	26,2	32	57	155	200	494,5	780
最大流量 max flow rate (l/min)	0,9	1,5	2,1	3,3	5,5	8,4	15,4	24,5
最大壓力 max. working pressure (bars)	200	200	200	200	200	200	200	200
A	106	133	161	189	239	290	325	395
B	63	80	98	120	150	198	240	280
C	45	56	66	80	100	128	160	190
D	43	55	65	85	106	140	180	210
E	10	12,5	16	20	25	26	32	38
F	30	37,5	46	58	75	78	95	108
G	7	9	10	20	25	30	36	44
M	M10	M12	M16	M20	M24	M30	M36	M42
J	2 X G1/8" 2 x UNF 7/16"	2 X G1/4" 2 x UNF 9/16"	G1/4" UNF 9/16"	G1/4" UNF 9/16"	G1/2" UNF 7/8"	G1/2" UNF 7/8"	G1/2" UNF 7/8"	G1/2" UNF 7/8"
K	56	70	84	100	140	160	180	220
H	16	20	20	20	20	20	40	50
X	16	20	20	20	25	25	30	38
L	-	-	218	246	300	360	428	498

※ 註：所有尺寸單位均為mm。All dimensions are in millimetres.

▼ 自動夾模器系列之TR旋轉夾模器

SUNZUANT Q.D.C.S. TR 90° ROTARY DIE CLAMP

此型夾模器功能為：夾緊模具，特色：利用氣壓作動使夾模器旋轉90度以油壓進行夾模動作。

Function: Clamp die

Characters: The clamp rod is rotated 90° collapsed and the clammer clamps by hydraulic pressure.

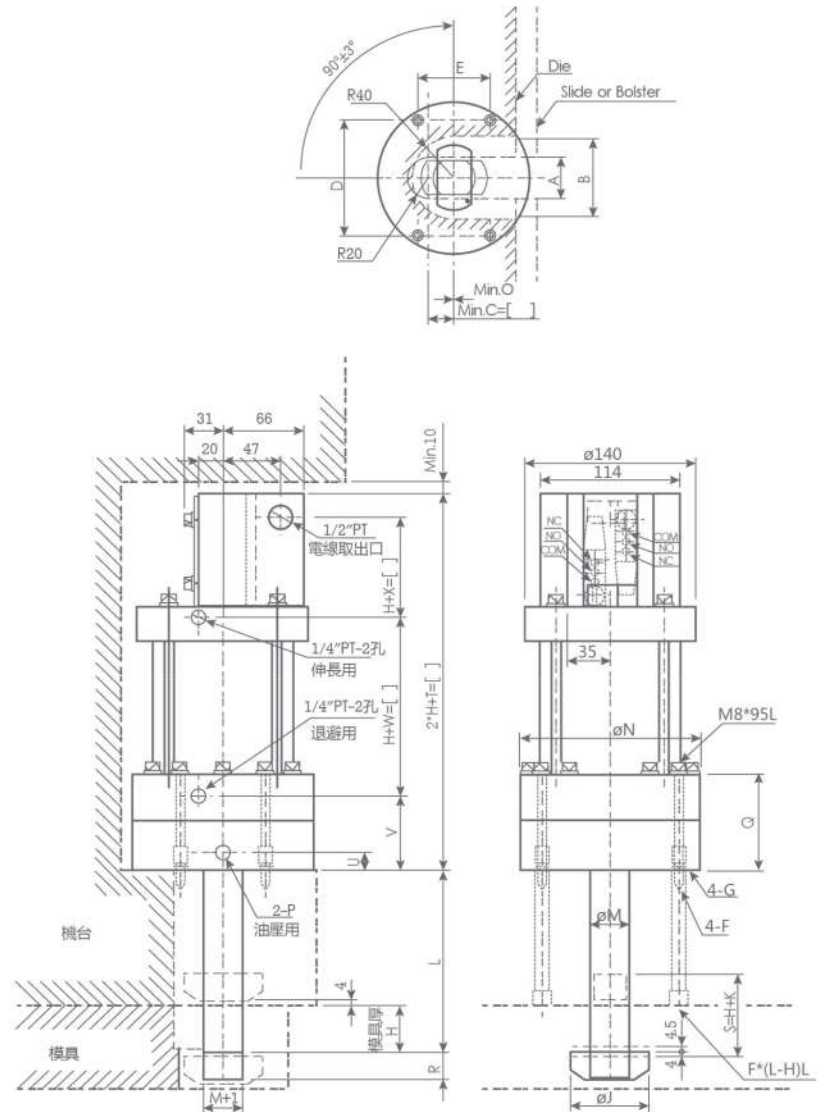


TR-□

夾模能力(ton)

△ 註：選用氣動泵組合規格為SP1014U-□□

◎ 外型尺寸 / Outline Dimensions



耐壓 Proof Pressure	27.0MPa (275kgf/cm ²)
最大工作壓力 Max Working Pressure	18.1MPa (185kgf/cm ²)
使用空氣壓力範圍 Working Pneumatic Range	0.4-0.7 (4-7kgf/cm ²)
使用溫度範圍 Ambient Temperature Range	-5°~60°c
使用油 Hydraulic Fluid	ISO VG32- VG5656

型號 Model	夾持力 (油壓185kg/cm ² 時) Clamping Force (at 185kg/cm ²)	所需油量 (CC) Required Quantity	A±1	MIN.B	MIN.C	D	E	F	G	J	K	M	N	PT	Q	R	T	U	V	W	X	質量 (kg) Mass
TR-6	6	32.5	40	75	25	112	70	M8*深16	M12*深20	64	30	32	148	1/4	79	22	232	15	61	108	44	20
TR-10	10	52.5	50	95	30	116	70	M10*深25	M14*深30	84	35	40	158	3/8	89	27	252	16	74	110	49	25
TR-16	16	84.0	60	110	35	120	76	M10*深25	M14*深35	99	40	50	168	3/8	94	32	267	16	79	115	54	27

▼ 自動夾模器系列之CE/CF搖擺夾模器

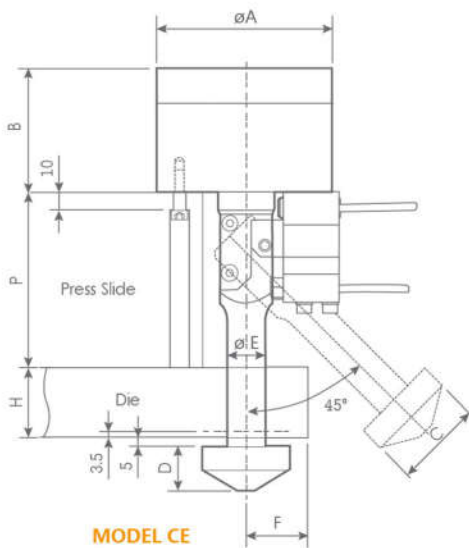
SUNZUANT Q.D.C.S. CE/CF SWING TYPE NOW-TOUCH CLAMP

此型夾模器功能為：夾緊模具，特色：油壓驅動使夾模器擺開換上模具後，即擺入進行夾模。

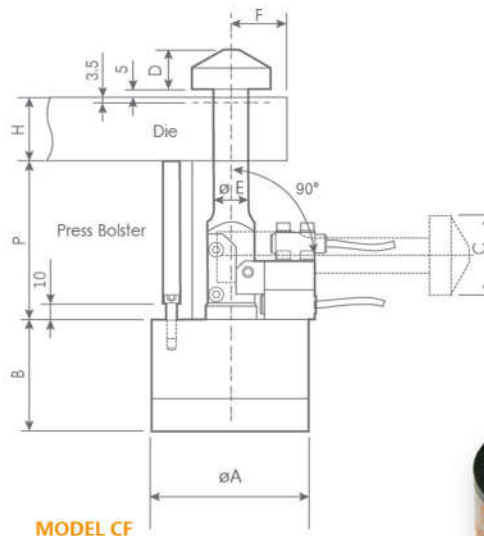
Function: Clamp die

Characters: Swing clammer, which is hydraulically driven to clamp dies and plates.

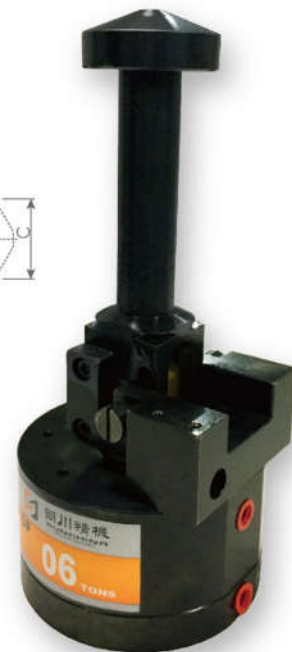
◎ 外型尺寸 / Outline Dimensions



MODEL CE



MODEL CF

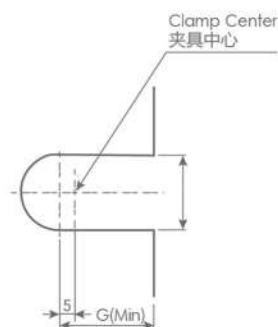


CE/CF - □

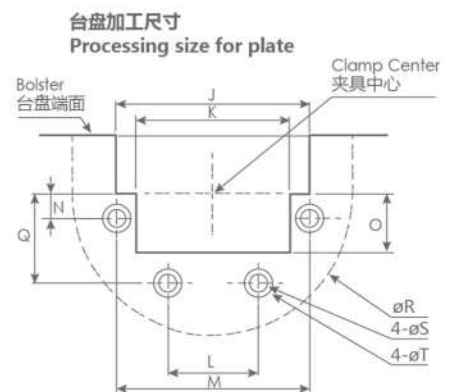
夾模能力(ton)

※ 註：選用氣動泵組合格為SP1014U-□□

型式 Model		C□- 4	C□- 6	C□- 10
夾力 Capacity Of Clamp	tons	4	6	10
油壓壓力 Hydraulic Pressure	kg/cm ²	250	250	250
氣壓壓力 Pneumatic Pressure	kg/cm ²	3~5	3~5	3~5
油缸總行程 Total Stroke Of Cylinder	mm	19	19.5	24.5
夾具行程 Stroke Of Clamp	mm	5	5	5
預留行程 Preserved Stroke	mm	3.5	3.5	3.5



模具加工尺寸 Processing dimensions for the die



型號 Model	A	B	C	D	E	F	G	I	J	K	L	M	N	O	Q	R	S	T
C□- 4	ø102	70	ø50	25	ø22	25	30	ø24	83	66	39	83	10.5	25	38	ø120	ø7	ø12
C□- 6	ø125	73	ø60	25	ø28	30	35	ø30	93	70	49	93	10.5	30	43	ø145	ø7	ø12
C□- 10	ø145	93	ø75	30	ø34	37.5	43	ø36	130	80	59	120	10.5	35	50	ø165	ø9	ø16